

Zehra Simay SERDAROGLU 1132095



SITE PLAN 1/2000

While designing it was important to create people adequate praying areas but also having connection with each other. In this design all the religion areas has connected each other. On the first floor the church is located and on its ceiling, a part of the synagogue, which is located on the second floor, can be seen. Moreover in the ceiling of the synagogue, a part of the mosque, which located on the third floor can be seen. And the dome of the mosque is a kind of reflection to the roof of the whole building.

In this design it is also very important to have a relationship between outside and the inside of the building. Therefore a small garden was created which is connecting outside and inside and also 1 different entrances and this garden is continued inside as a winter garden and a garden gallery. Moreover this garden welcomes people to this building not only just for praying times but having some relaxing time during the daily life. Another design process is the create semi-transparent facade and point out the religion areas and their connection between each other. Therefore the reflection of a tree is used to create window motif and this motif is used on the windows of 3 religious areas to show the connection of this 3 religion. Also as a represent of being connected, it was used on the whole gallery window.

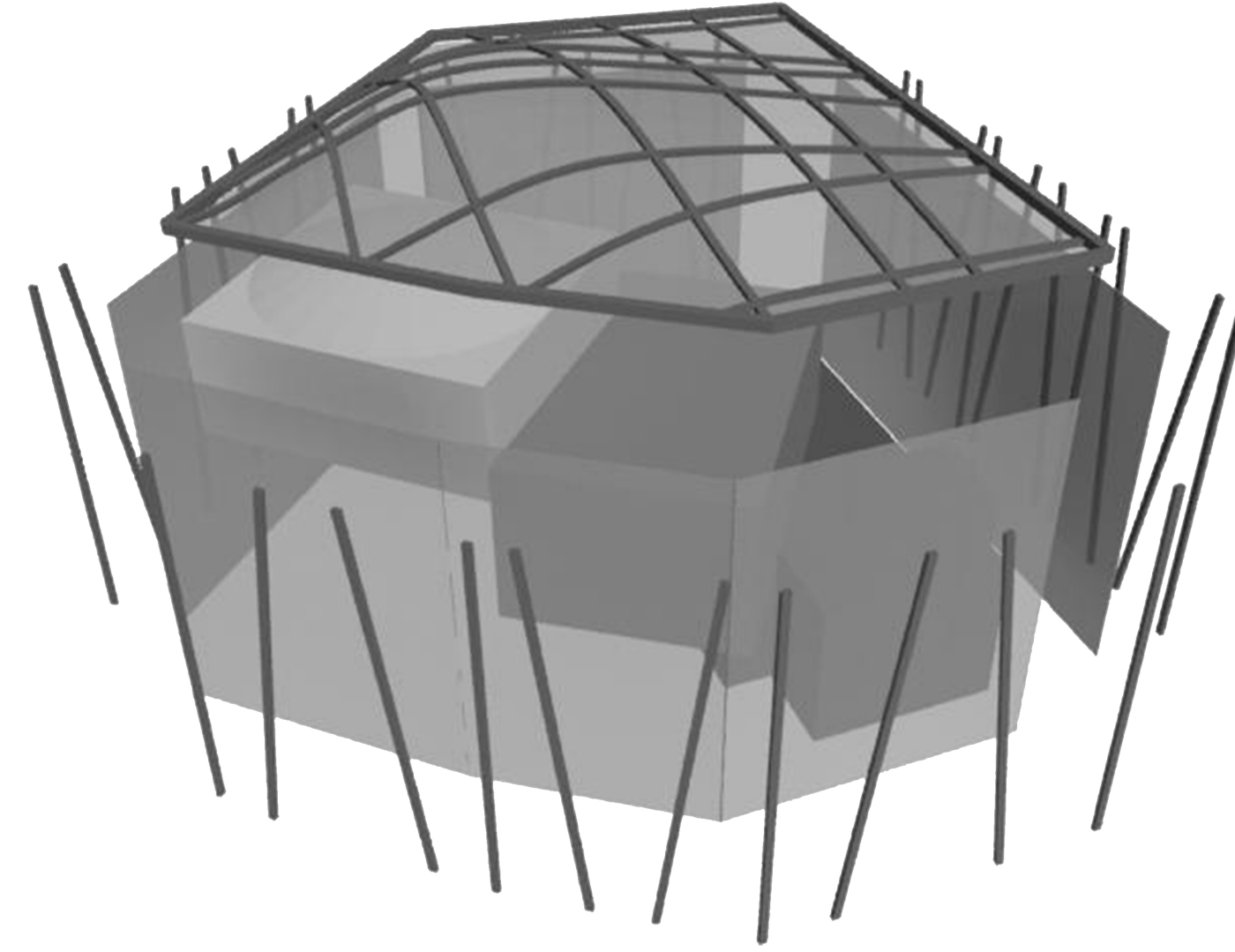
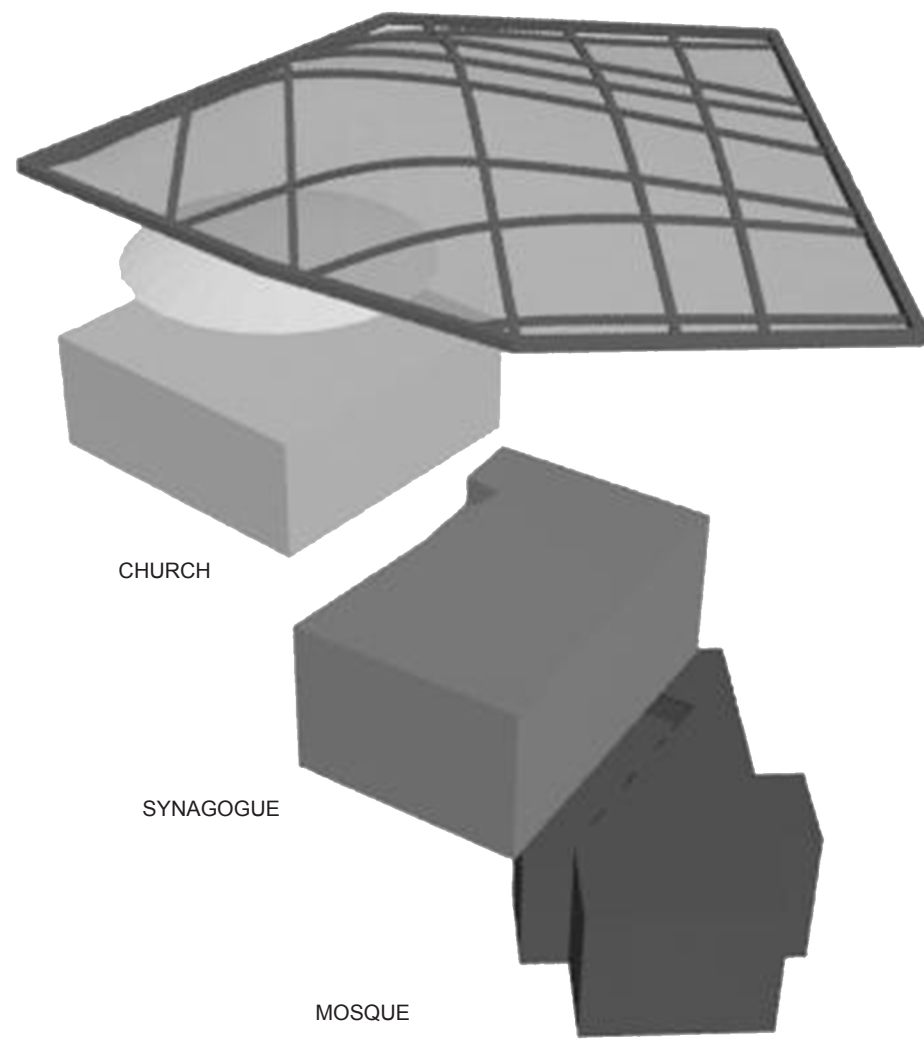
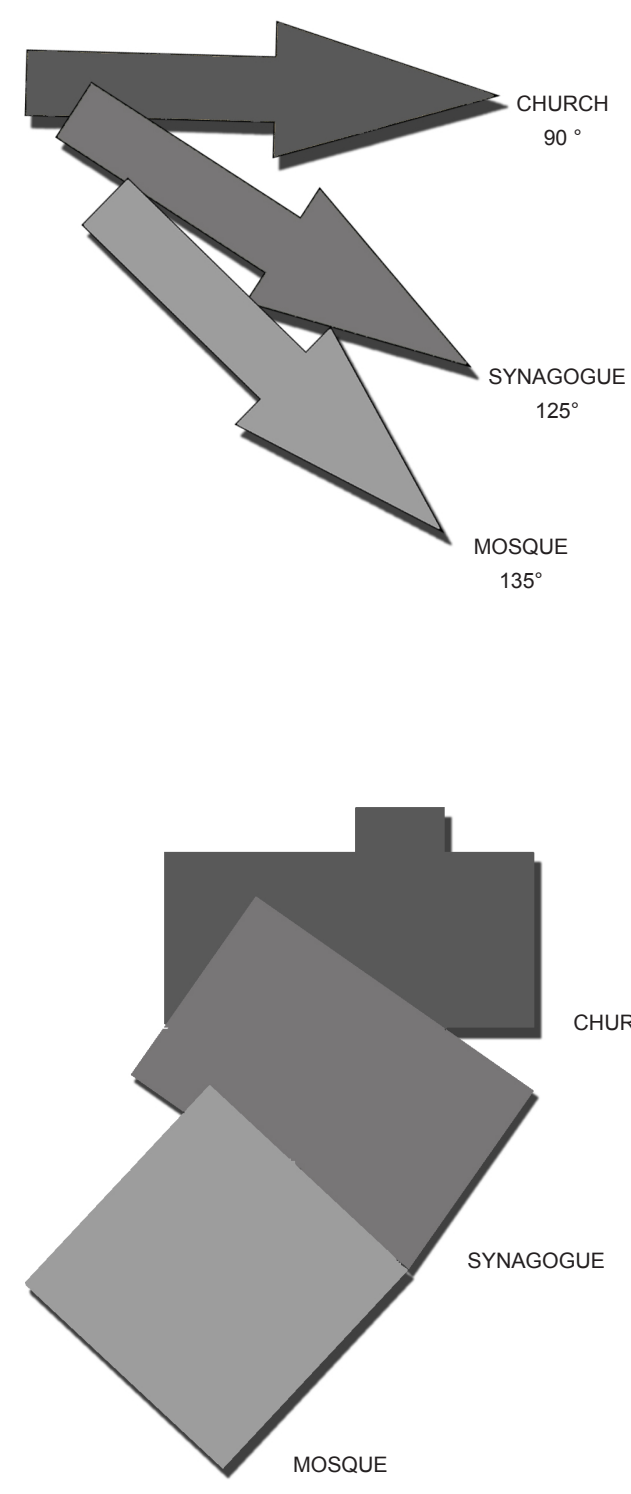
The aim of the project is to create a religious building which contains 3 religion, Judaism, Christianity, and Islam, in one. Since the building should provide all the requirements for all the religions, before starting to design the building, all the needs for these 3 religion was investigate properly.

For this design it is very important to locate all the religion areas on suitable praying directions and using the typical elements of each religion. Moreover another important point is to create for each religion its own private areas. Therefore each religion is located on one floor. This is not for making them completely separate, but it is more creating them adequate atmosphere, while they are practicing their own religion in all its aspects. For example all of them has different religious days and attitudes, on different days or on the same day. Now with this layering, it is completely possible them to celebrate and practice their religious days appropriately.

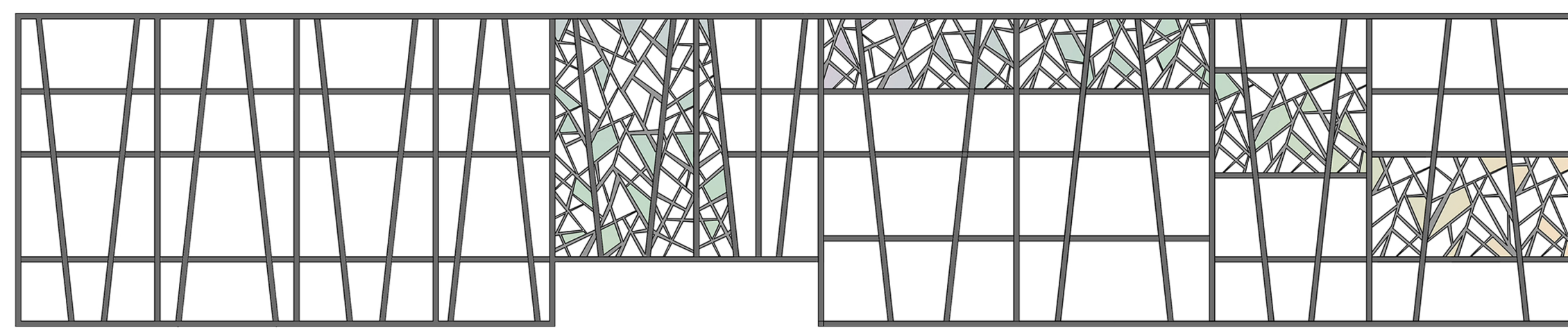
Meanwhile it is very important to create areas for all the people, therefore the ground floor is designed as a common space, containing a small winter garden and a cafe.



PROJECT EXTERIOR

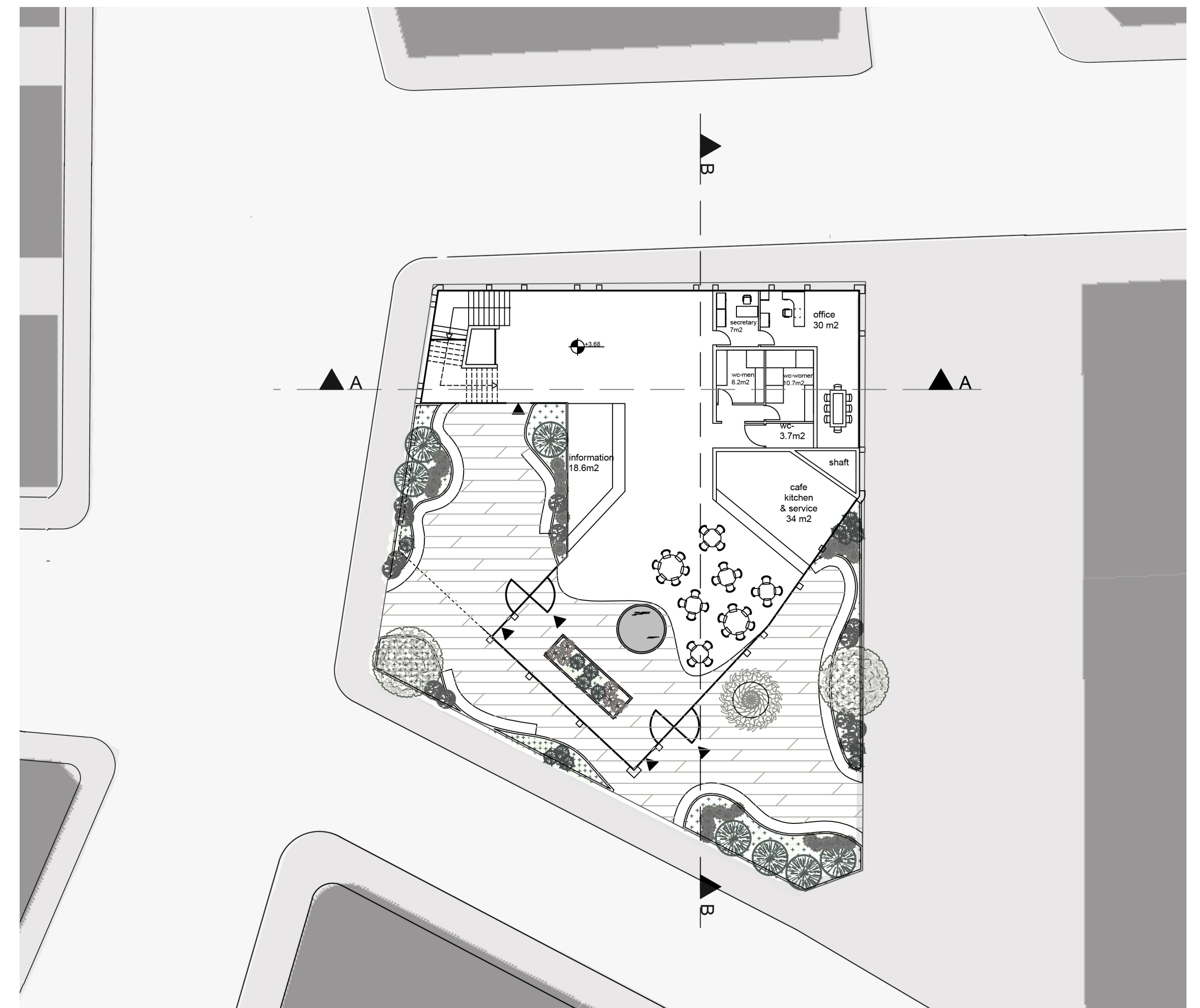


DESIGN CONCEPT

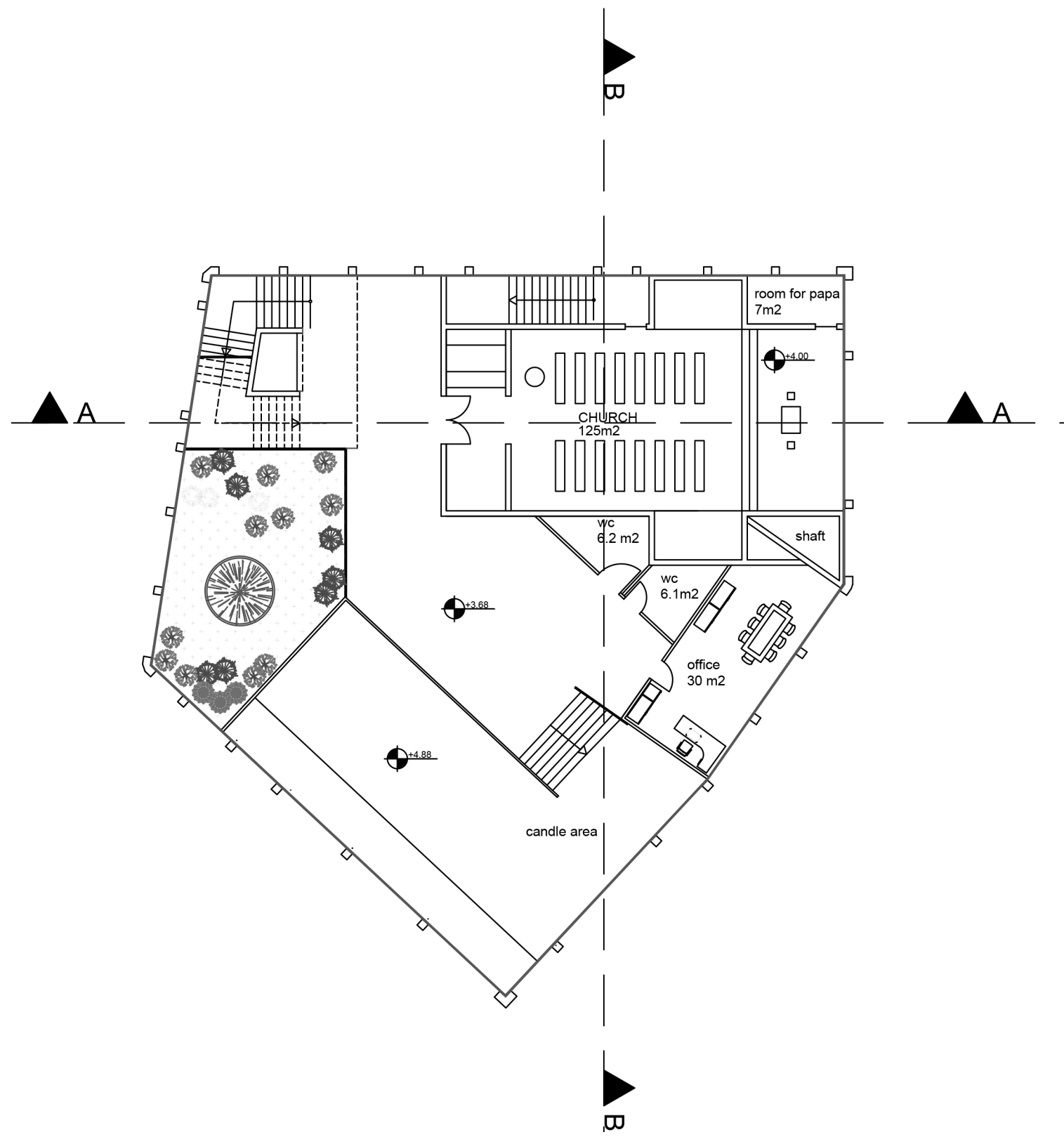


FACADE CONCEPT

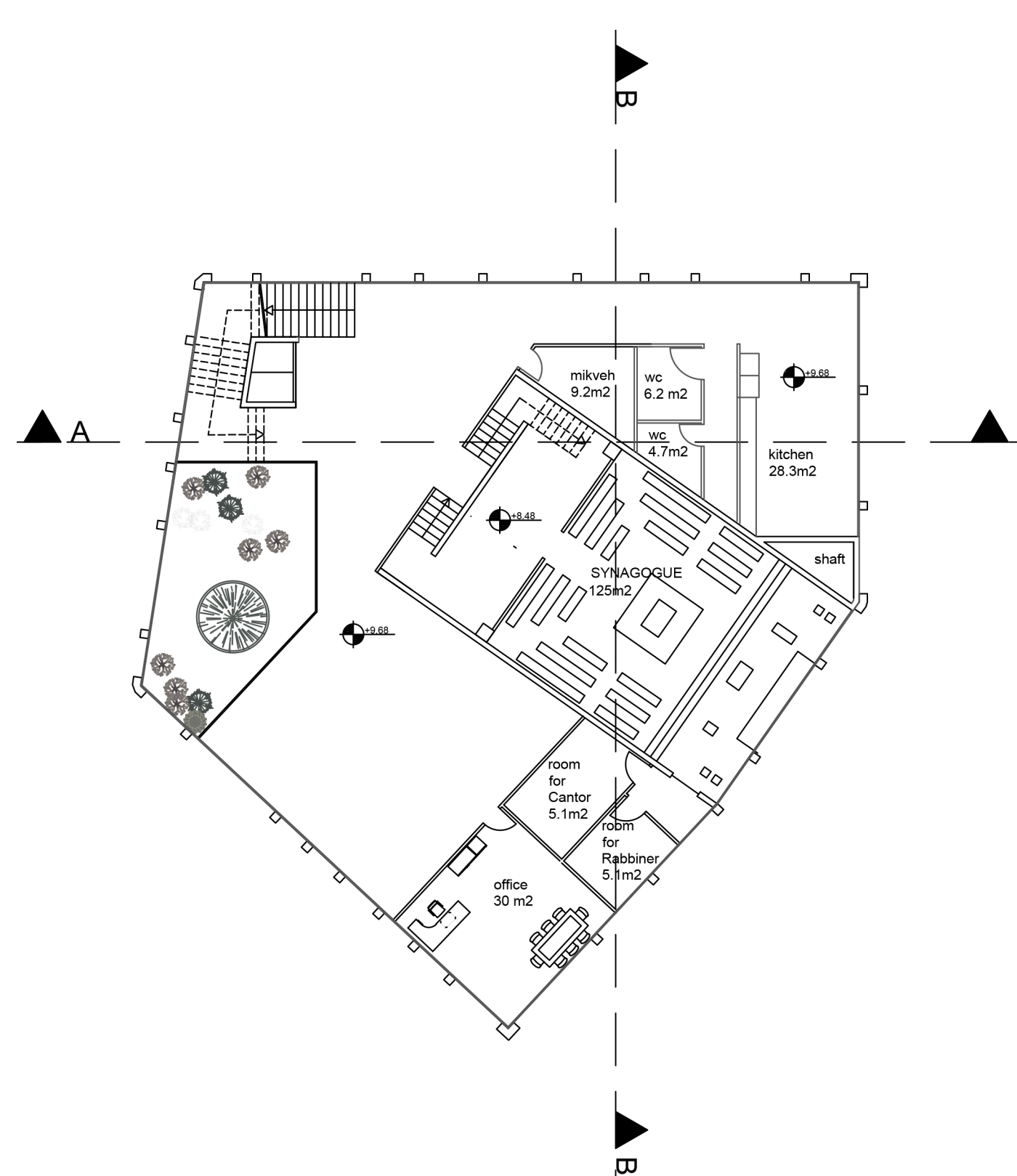
- Magnolia grandiflora
- Cedrus deodara
- Eucalyptus globulus
- Callistemon citrinus
- Juniperus chinensis
- Juniperus sabina
- Nandina domestica



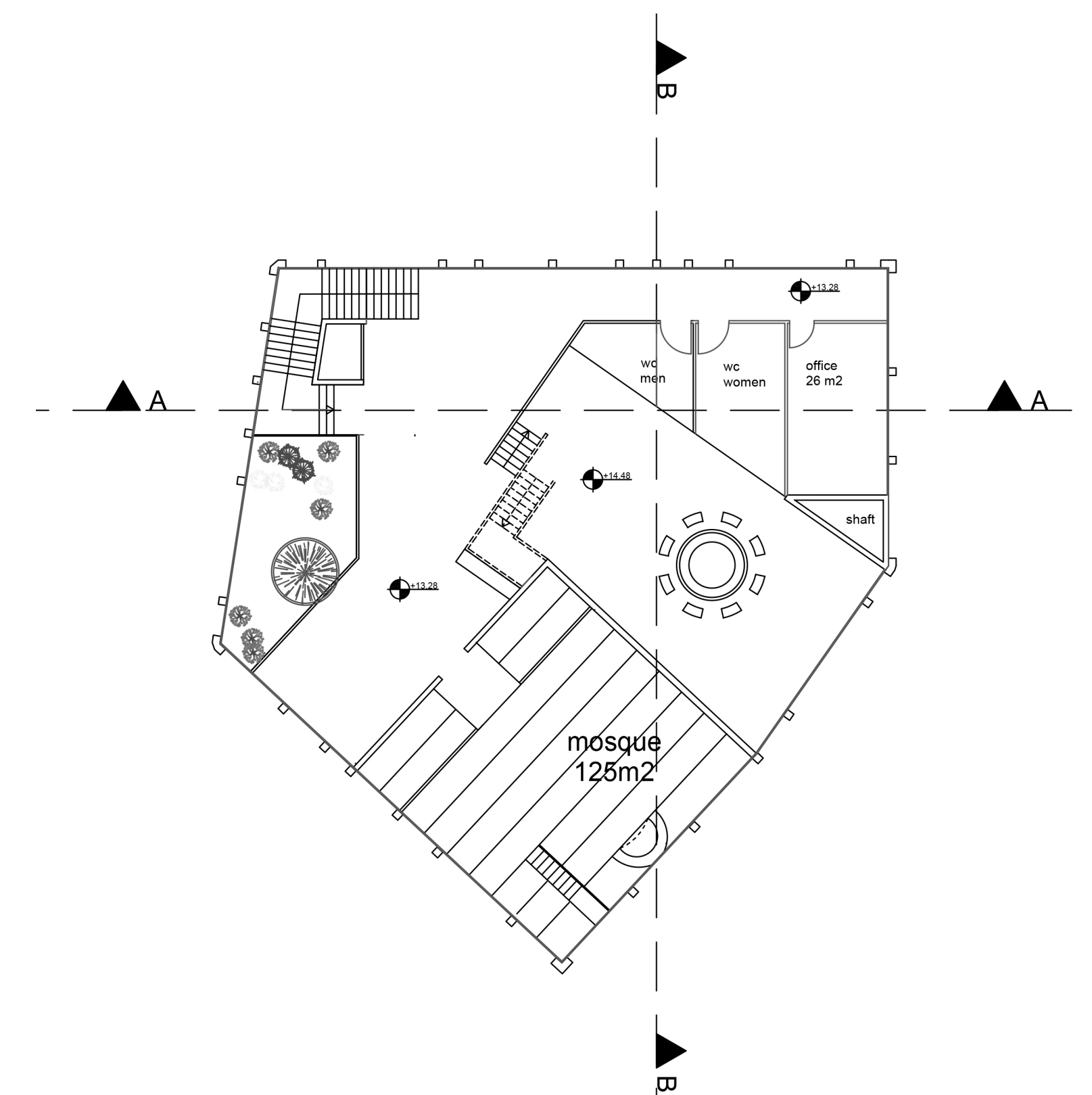
GROUND FLOOR PLAN 1/200



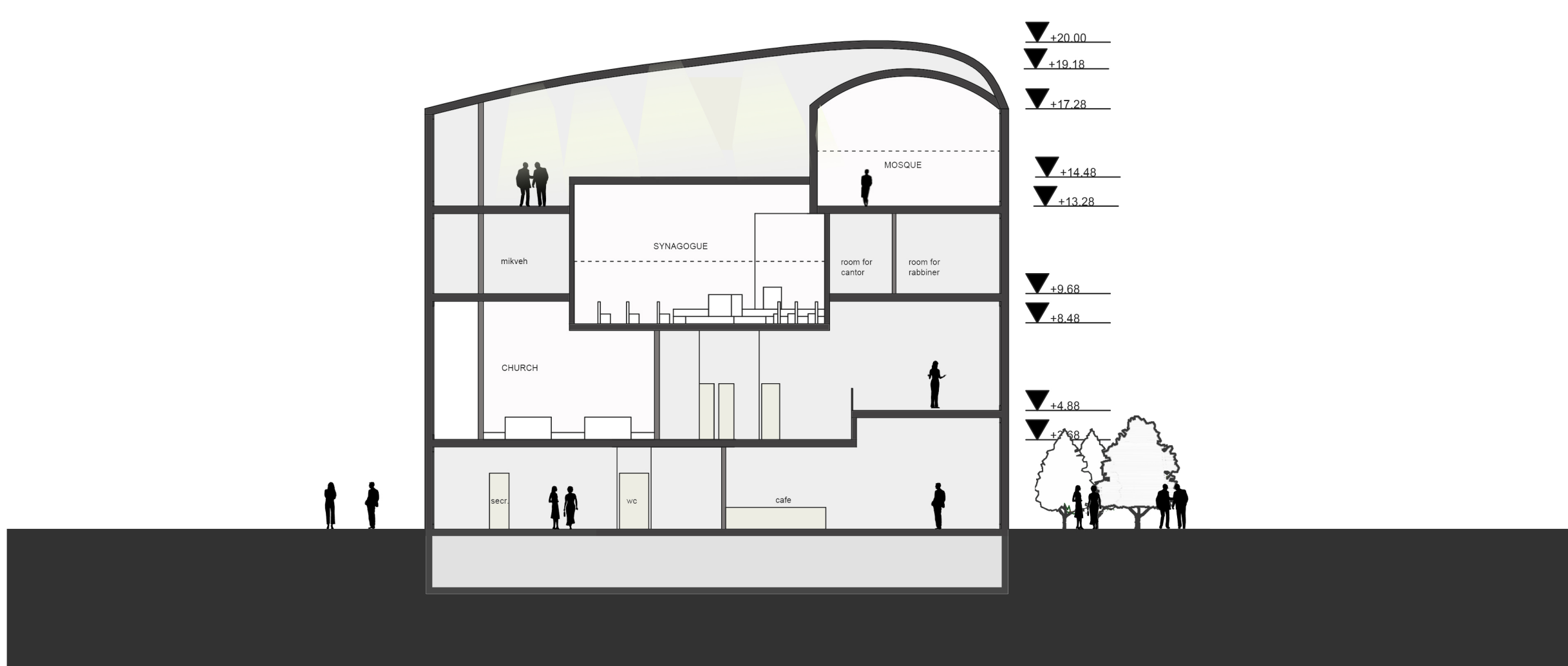
1 FLOOR PLAN 1/200



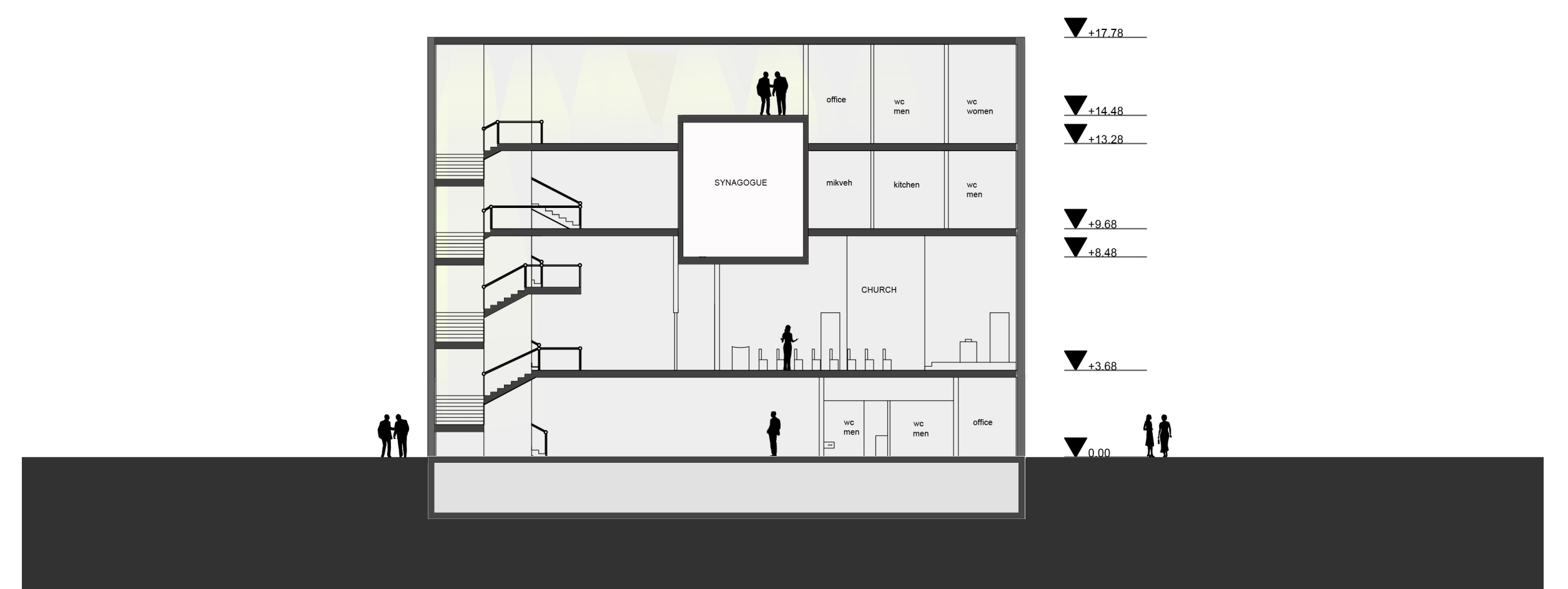
2 FLOOR PLAN 1/200



3 FLOOR PLAN 1/200



SECTION BB 1/200



SECTION AA 1/200